

The Aspen

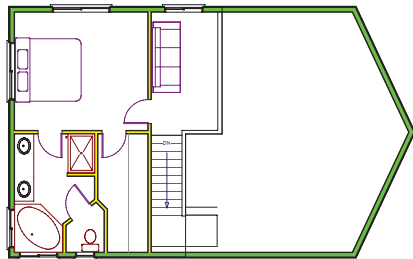


The Aspen features 2,556 total square feet including 3 bedrooms, 2.5 baths, a large spacious living room, open kitchen and dining area with a main floor laundry, powder bath and mud room. This home also includes spacious wrap around covered porches and an open sundeck. The basement also features a large single car garage or second living room.

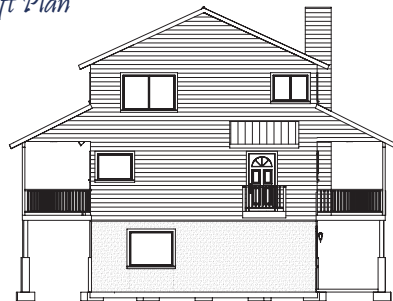


Model Details

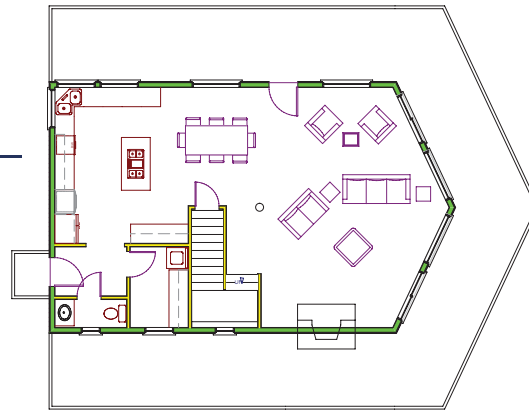
Living Sq Ft:	2494	Garage Sq Ft:	378
Total Sq Ft:	2872	Bedrooms:	3
		Bathrooms:	2.5



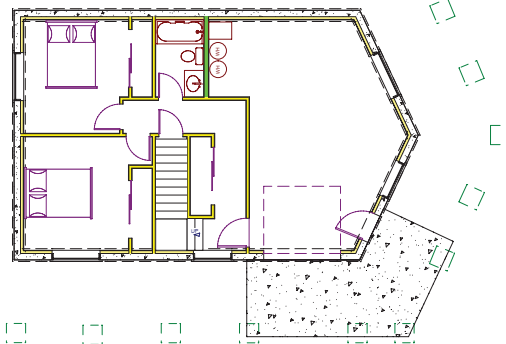
Loft Plan



Rear Elevation



Main Floor Plan



Basement Floor Plan

Interior Features and Finishes

- Cultured Stone fireplace rock
- Hickory hardwood floors in kitchen & dining
- Slate natural stone floors in bathrooms & utility rooms
- Glazed alder or maple cabinets
- Kwikset door hardware w/ oil-rubbed bronze finish
- Pine T&G in great room
- Carrier furnace w/ control
- 1 x 4 pine casing and base trim
- Santa Fe style solid knotty pine doors
- Delta oil-rubbed bronze faucets and bath hardware
- Fireplace Xtordinaire 36" Elite wood burning fireplace
- Custom hand-textured walls
- AV & Security system pre-wire
- Mohawk or Shaw Carpet
- Customizable floor plan
- 1 yr warranty

Exterior Features and Finishes

- Exposed aggregate foundation
- 1/2 log siding w/ stain
- Elk Prestique 40 yr shingles w/ steel fascia
- Western red cedar window/door trim
- 1/2 lite woodgrain fiberglass doors
- Tan Jeld-Wen vinyl windows w/ low-E
- 1 x 8 pine soffit
- Martin insulated garage doors w/ openers
- Gravel in parking areas, under decks, and around drip line

Please contact us for more information, including current pricing.

Jacobs Construction - 1416 W. Highway 14 - P.O. Box 1286 - Duck Creek Village, VT 84762
 Phone: 435.648.3318 - Fax: 435.648.3319 - www.jacobsconstruction.com - info@jacobsconstruction.com