

The Engleman

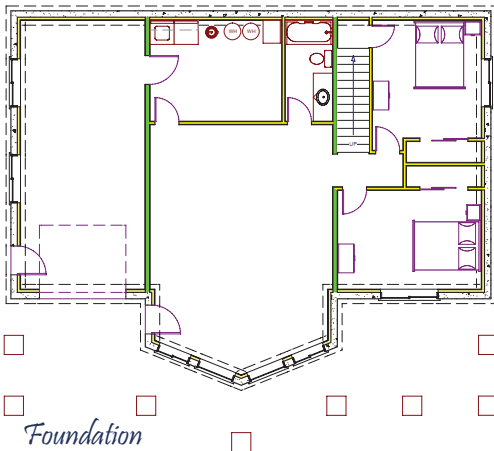


With 3,280 sq. ft. of gross area plus an oversized garage, this cabin has plenty of space. Features on the main level include the Master Suite plus two more bedrooms and an open Kitchen/Dining/Living Area. The basement features an open living area, with two more bedrooms, a full bathroom and the garage. The Utility/Laundry room is tucked out of the way in the basement adjacent to the garage.

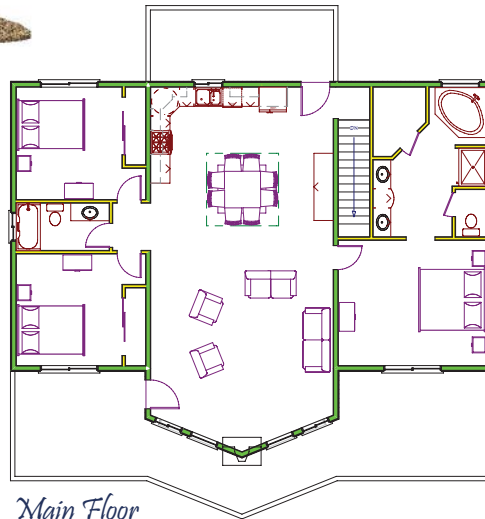


Model Details

Living Sq Ft:	2860
Garage Sq Ft:	420
Total Sq Ft:	3280
Bedrooms:	4
Bathrooms:	3.5



Foundation



Main Floor



Side Elevation

Interior Features and Finishes

- Cultured Stone fireplace rock
- Hickory hardwood floors in kitchen & dining
- Slate natural stone floors in bathrooms & utility rooms
- Glazed alder or maple cabinets
- Kwikset door hardware w/ oil-rubbed bronze finish
- Pine T&G in great room
- Carrier furnace w/ control
- 1 x 4 pine casing and base trim
- Santa Fe style solid knotty pine doors
- Delta oil-rubbed bronze faucets and bath hardware
- Fireplace Xtordinary 36" Elite wood burning fireplace
- Custom hand-textured walls
- AV & Security system pre-wire
- Mohawk or Shaw Carpet
- Customizable floor plan
- 1 yr warranty

Exterior Features and Finishes

- Exposed aggregate foundation
- 1/2 log siding w/ stain
- Elk Prestique 40 yr shingles w/ steel fascia
- Western red cedar window/door trim
- 1/2 lite woodgrain fiberglass doors
- Tan Jeld-Wen vinyl windows w/ low-E
- 1 x 8 pine soffit
- Martin insulated garage doors w/ openers
- Gravel in parking areas, under decks, and around drip line

Please contact us for more information, including current pricing.

Jacobs Construction - 1416 W. Highway 14 - P.O. Box 1286 - Duck Creek Village, VT 84762
 Phone: 435.648.3318 - Fax: 435.648.3319 - www.jacobsconstruction.com - info@jacobsconstruction.com