



THE PINYON



PLAN SPECS:

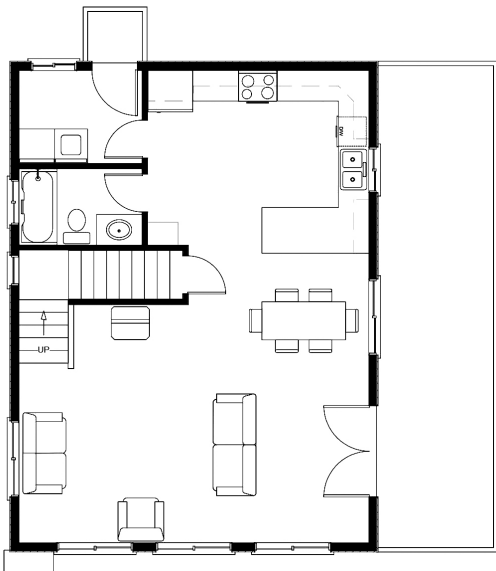
AREA: 2304 SQ. FT.
BEDROOMS: 3

BATHROOMS: 2.75
FLOORS: 3

GARAGES: 1

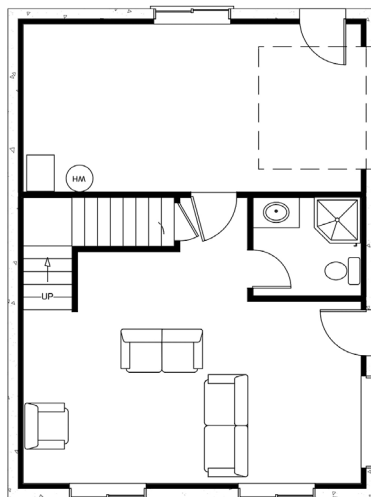
Main Floor

AREA: 768 sq. ft.



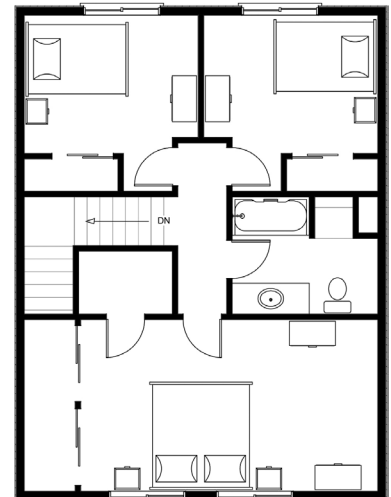
Lower Floor

AREA: 768 sq. ft.



Upper Floor

AREA: 768 sq. ft.



Open living area, covered porch, mudroom, full bathroom, garage family room